



Food and Agriculture Organization
of the United Nations

WORLD SOIL DAY

— 2017 —

IL CONSUMO DI
SUOLO IN
PUGLIA FRA
DINAMICHE E
POLITICHE
TERRITORIALI

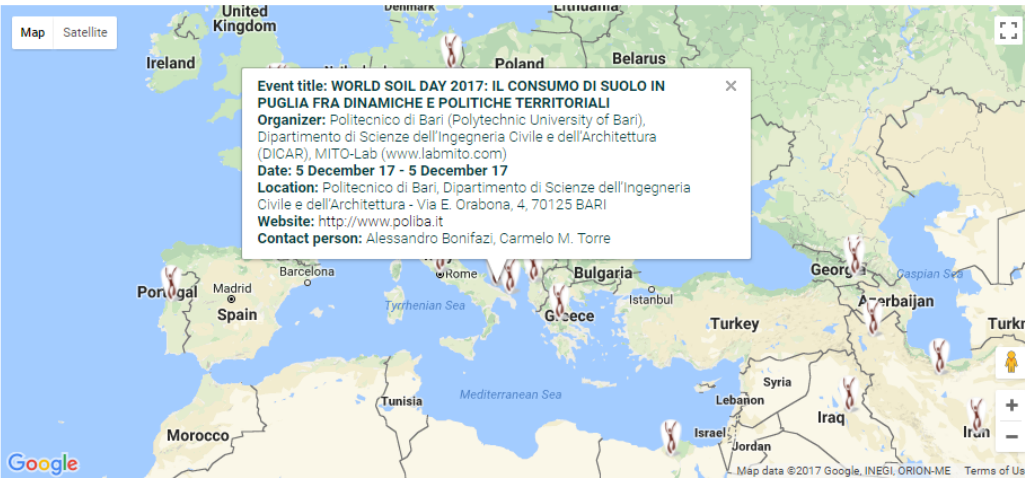
Politecnico di Bari
Dipartimento di Scienze dell'Ingegneria Civile e dell'Architettura

Aula Magna Dicar
5 DICEMBRE 2017



World Soil Day

- Home
- About World Soil Day
- Campaign Materials
- Activities
- Global Soil Organic Carbon map
- Worldwide Events**
- Key Messages



*Inclusion in the WSD events map does not represent an endorsement from the United Nations for an organization or initiative.



Add your event on the map

Are you planning to have an event on soils? Etching your students, giving a lecture?

Join our global campaign by **registering your event on the map**. And do not forget to **share with us** your successes by sending us pictures of your event which will be uploaded on our growing Flickr photogallery...



GLOBAL SOIL PARTNERSHIP



WORLD SOIL DAY

2017

IL CONSUMO DI SUOLO IN PUGLIA FRA DINAMICHE E POLITICHE TERRITORIALI

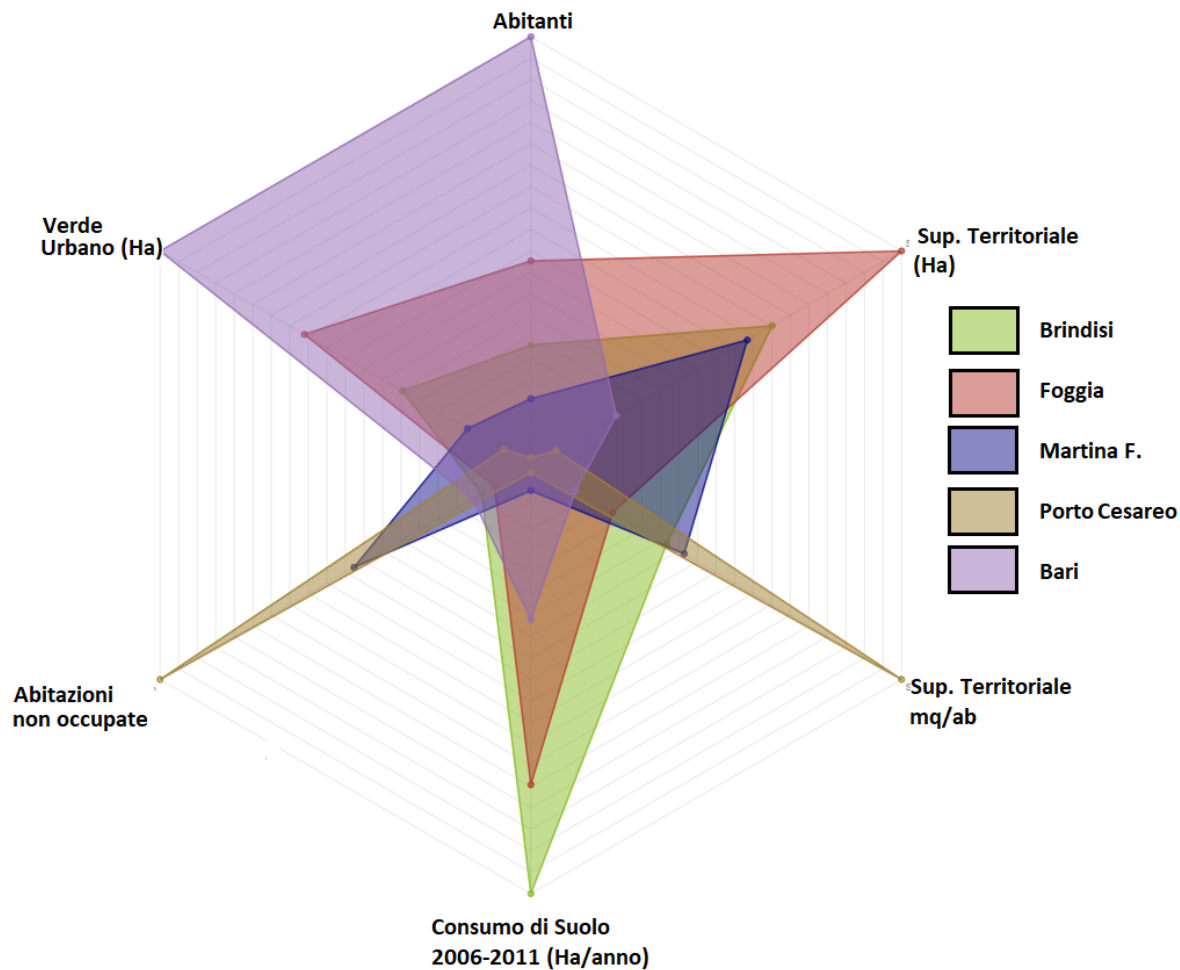


Food and Agriculture Organization
of the United Nations

WORLD SOIL DAY

2017

IL CONSUMO DI SUOLO IN PUGLIA FRA DINAMICHE E POLITICHE TERRITORIALI



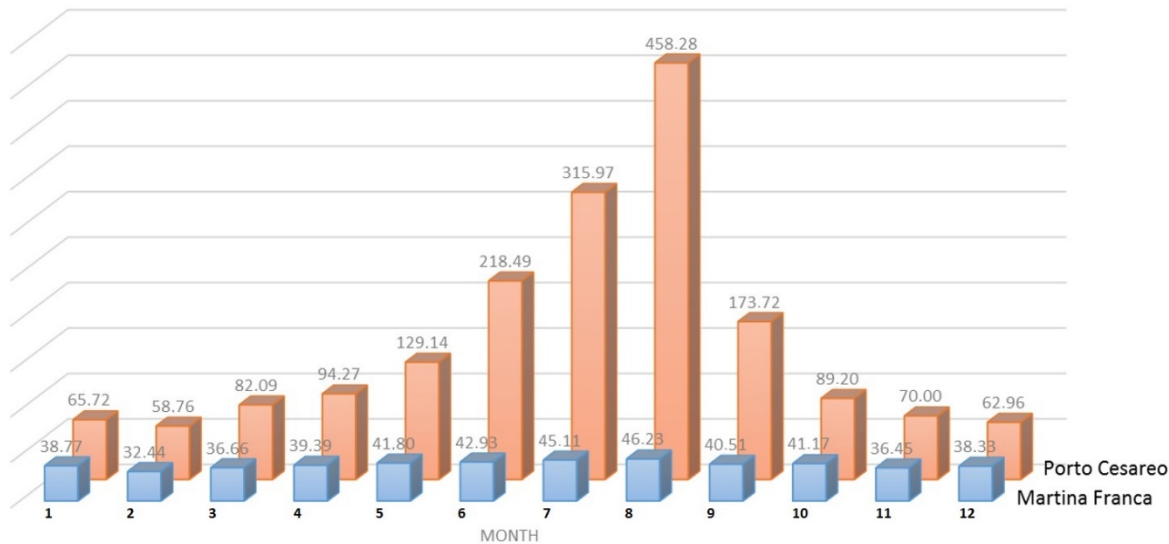


Food and Agriculture Organization
of the United Nations

WORLD SOIL DAY

2017

IL CONSUMO DI
SUOLO IN
PUGLIA FRA
DINAMICHE E
POLITICHE
TERRITORIALI



Indicatori di uso temporaneo
Produzione Mensile Rifiuti Pro Capite
Raffronto Martina Franca (Valle d'Itria)
Porto Cesareo (Costa Jonica)

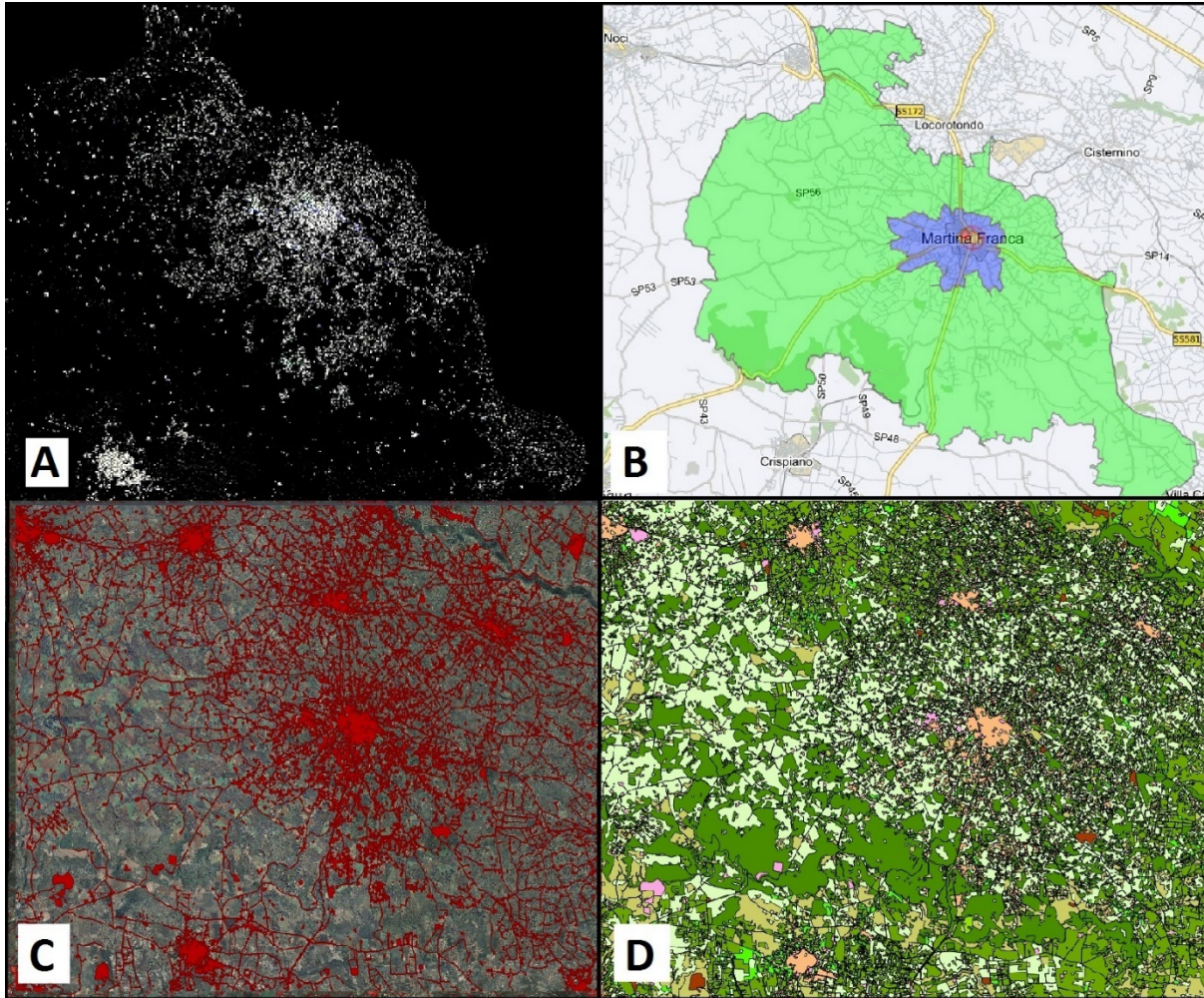


Food and Agriculture Organization
of the United Nations

WORLD SOIL DAY

2017

IL CONSUMO DI
SUOLO IN
PUGLIA FRA
DINAMICHE E
POLITICHE
TERRITORIALI



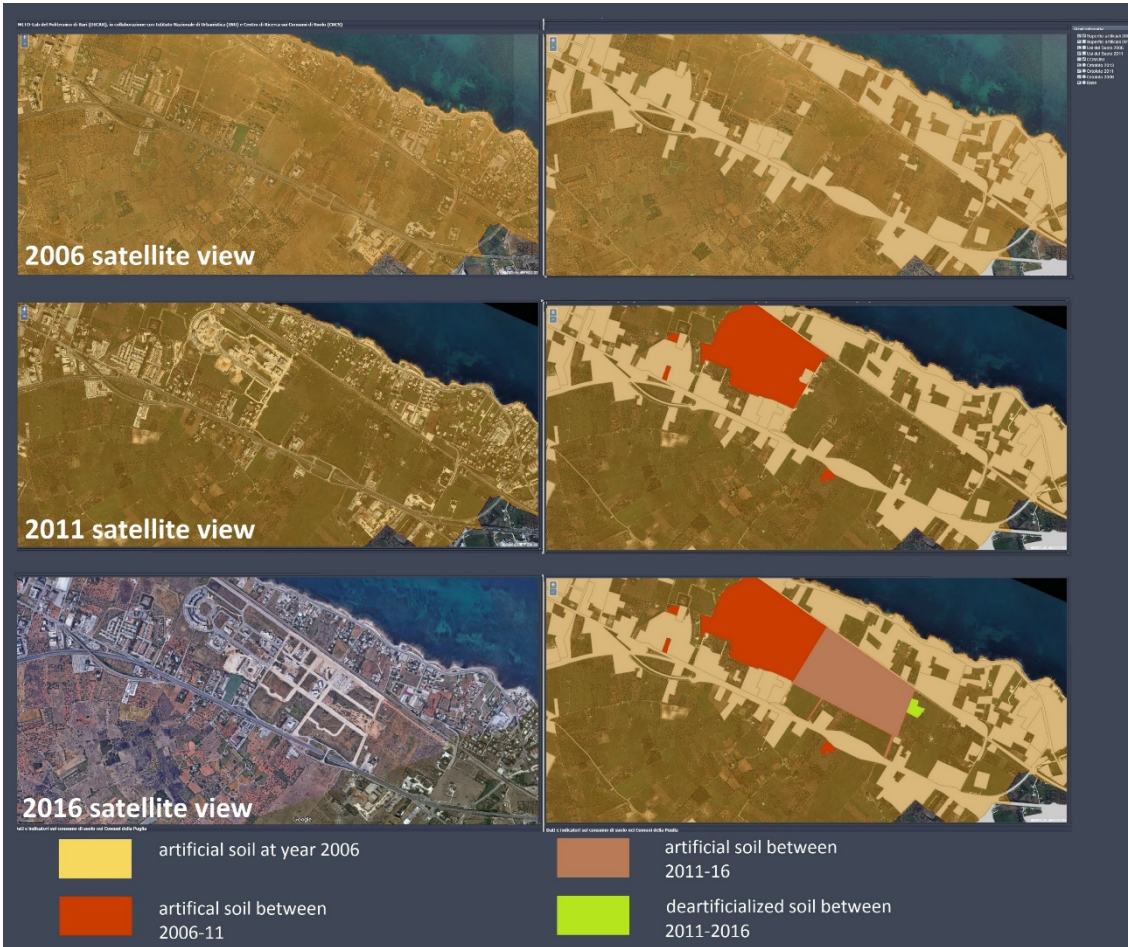


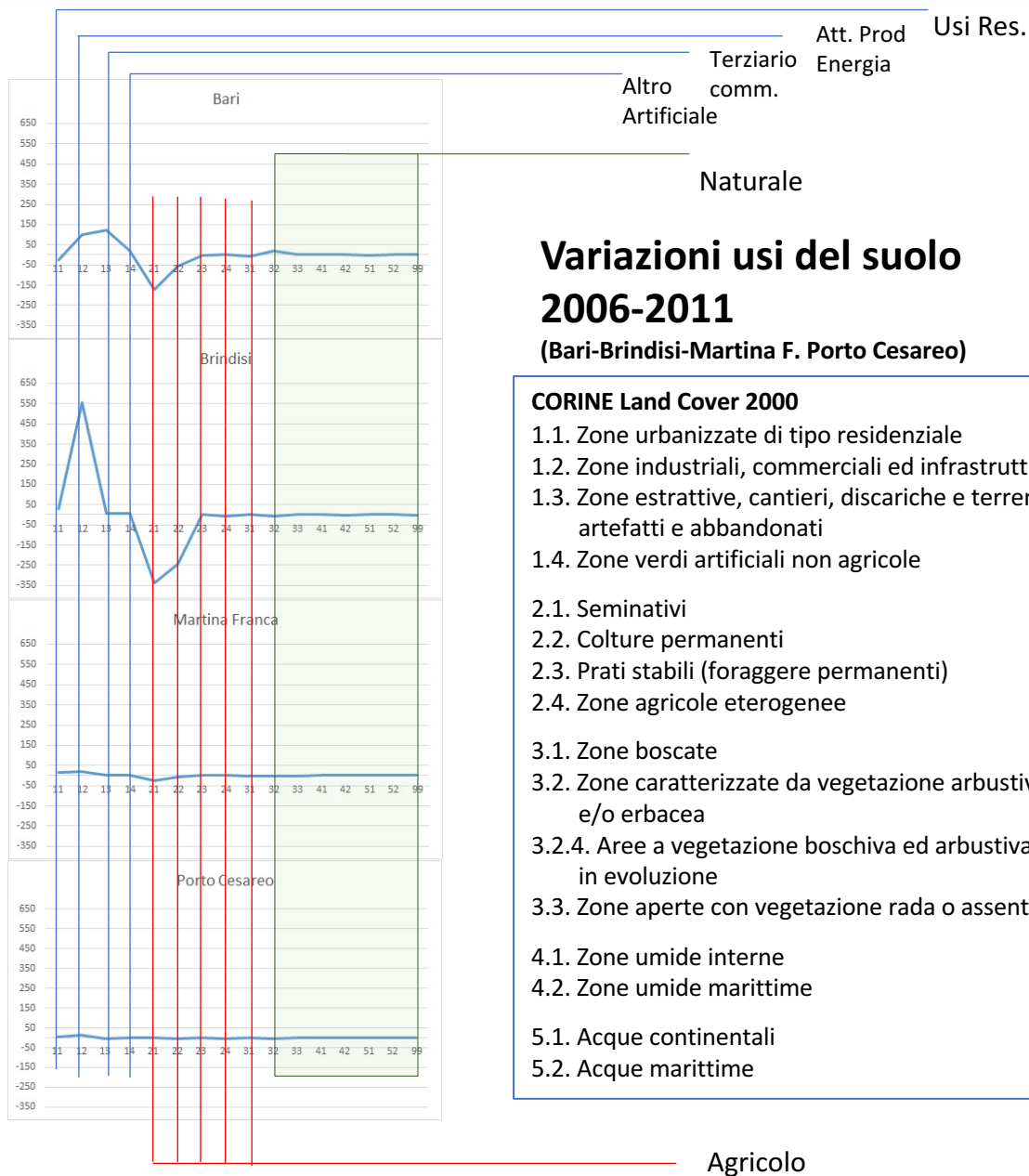
Food and Agriculture Organization
of the United Nations

WORLD SOIL DAY

2017

IL CONSUMO DI SUOLO IN PUGLIA FRA DINAMICHE E POLITICHE TERRITORIALI





Food and Agriculture Organization
of the United Nations

WORLD SOIL DAY

2017

IL CONSUMO DI
SUOLO IN
PUGLIA FRA
DINAMICHE E
POLITICHE
TERRITORIALI

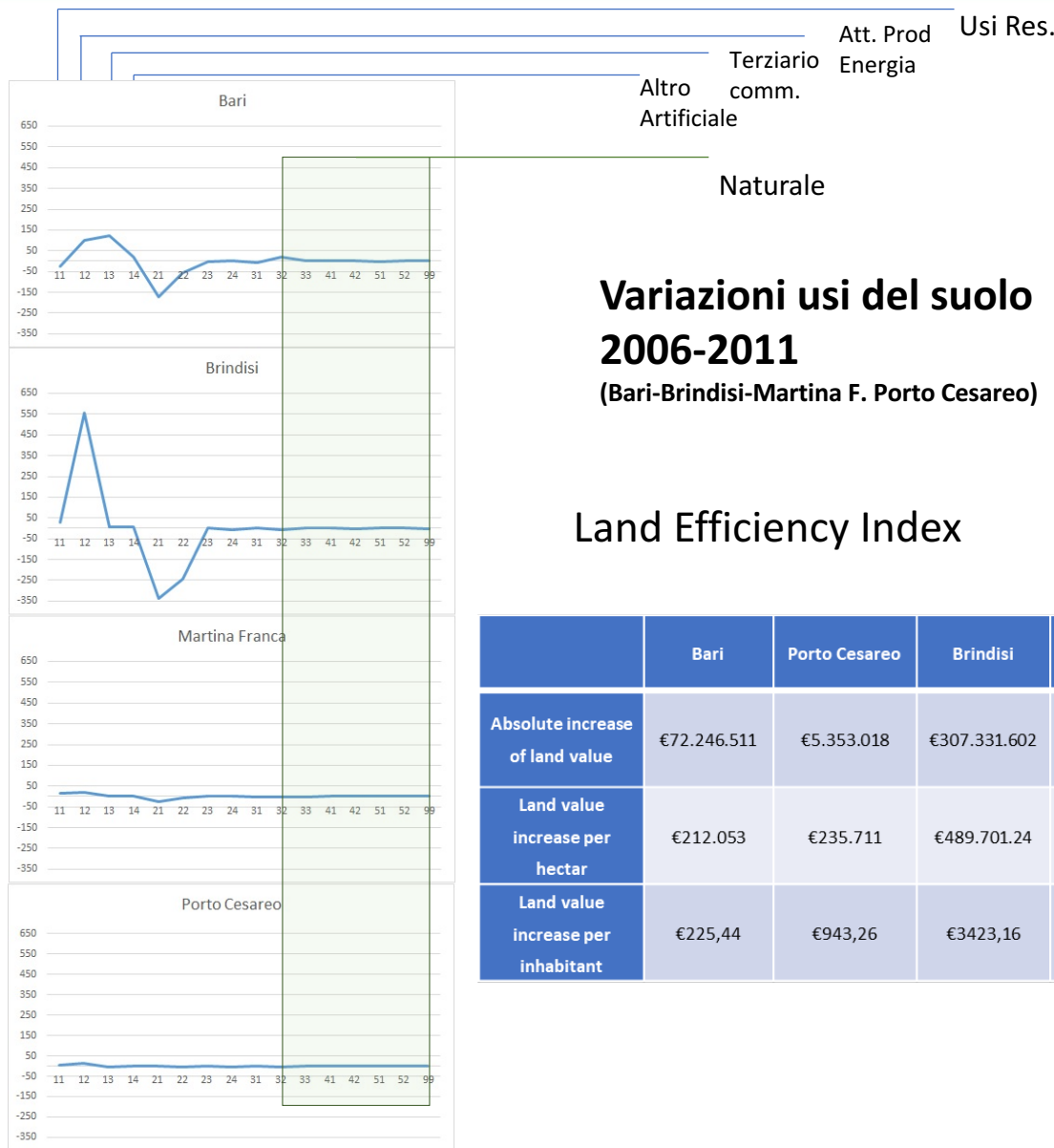


Food and Agriculture Organization
of the United Nations

WORLD SOIL DAY

2017

IL CONSUMO DI SUOLO IN PUGLIA FRA DINAMICHE E POLITICHE TERRITORIALI



Variazioni usi del suolo 2006-2011

(Bari-Brindisi-Martina F. Porto Cesareo)

Land Efficiency Index

	Bari	Porto Cesareo	Brindisi	Martina Franca
Absolute increase of land value	€72.246.511	€5.353.018	€307.331.602	€13.109.533
Land value increase per hectar	€212.053	€235.711	€489.701.24	€345.533
Land value increase per inhabitant	€225,44	€943,26	€3423,16	€263,35

Agricolo



Food and Agriculture Organization
of the United Nations

WORLD SOIL DAY

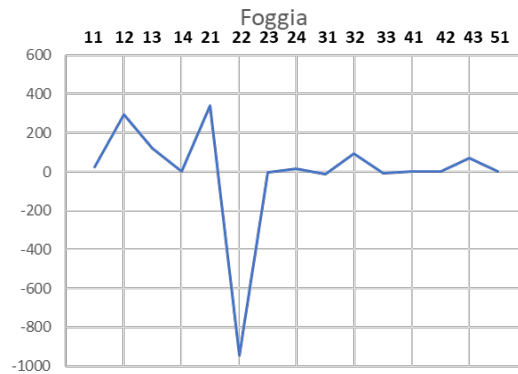
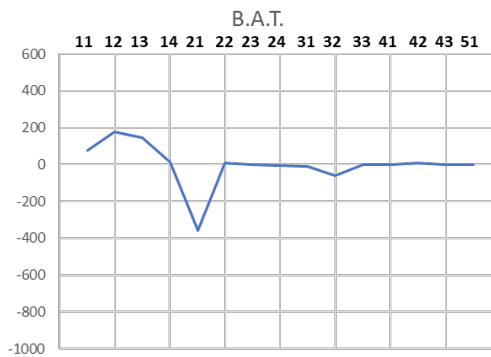
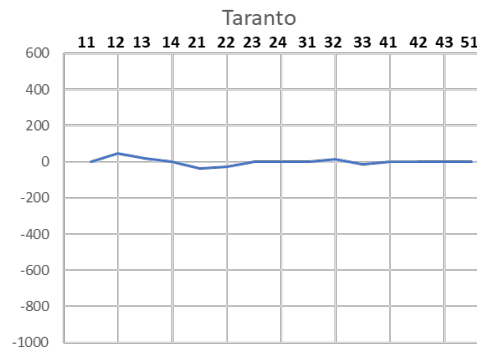
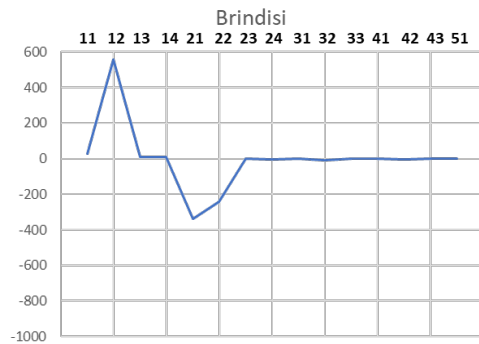
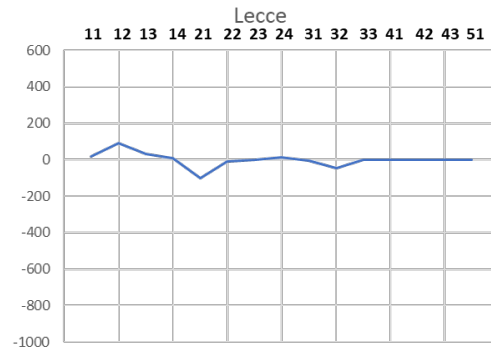
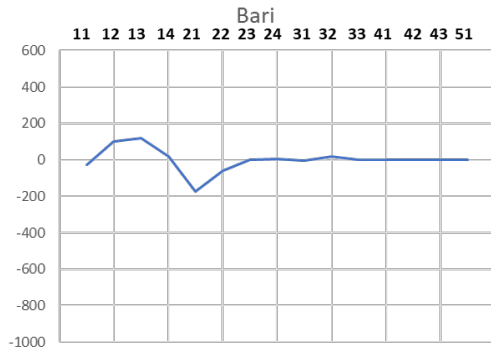
2017

IL CONSUMO DI SUOLO IN

PUGLIA FRA

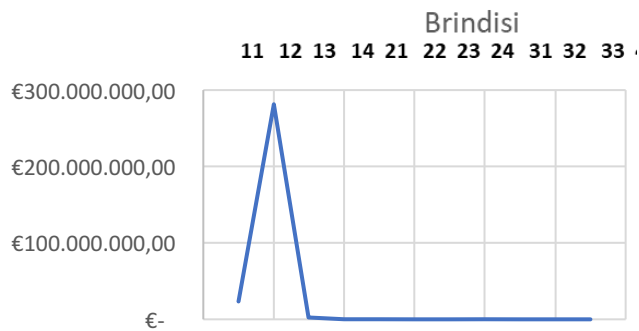
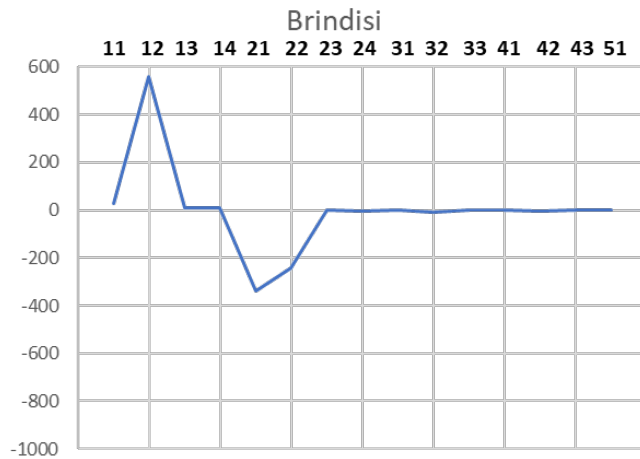
DINAMICHE E

POLITICHE TERRITORIALI



Andria
11 12 13 14 21 22 23 24 31 32 33





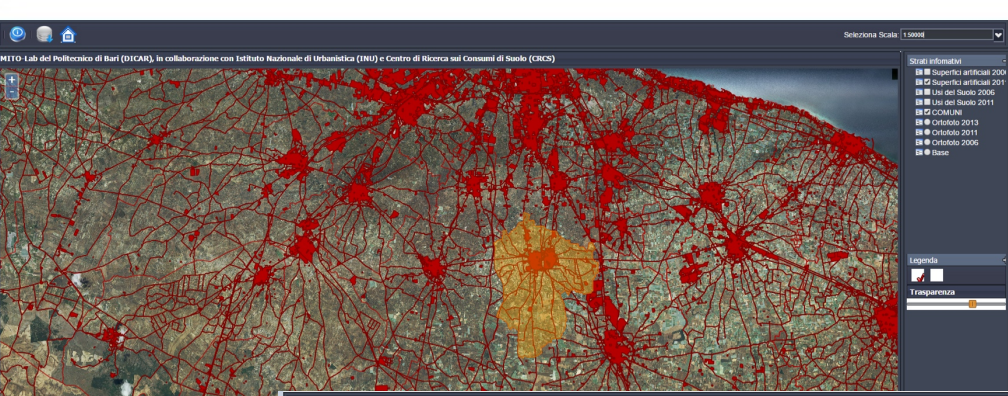
Food and Agriculture Organization
of the United Nations

WORLD SOIL DAY

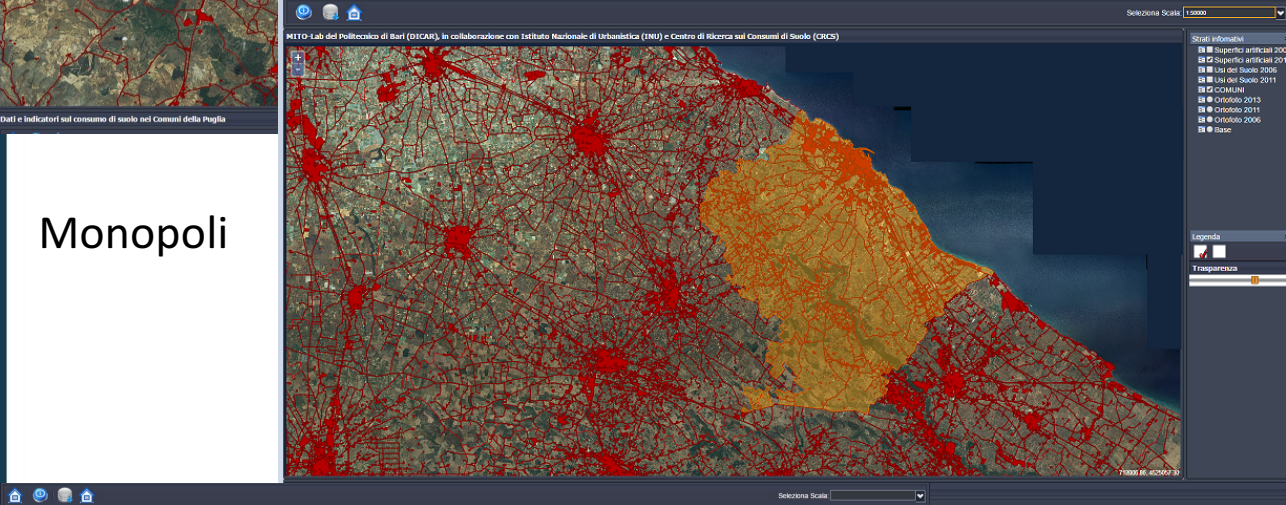
2017

IL CONSUMO DI SUOLO IN PUGLIA FRA DINAMICHE E POLITICHE TERRITORIALI

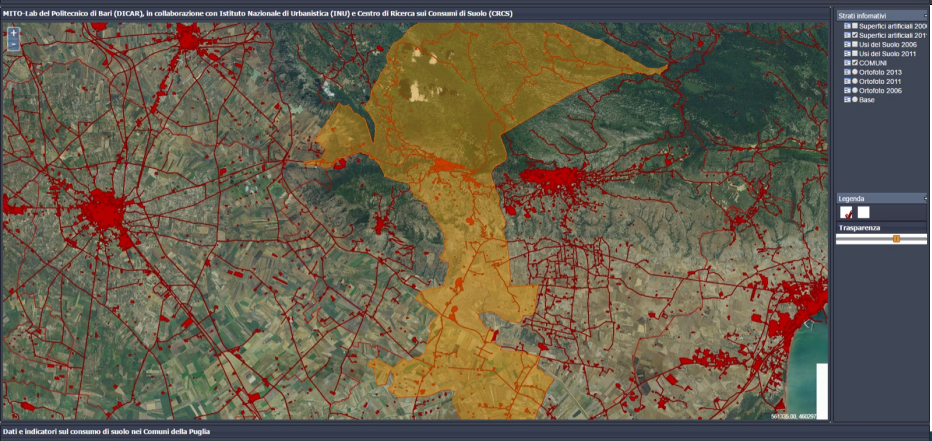




Adelfia



Monopoli



S. Marco in Lamis



WORLD SOIL DAY

2017

IL CONSUMO DI SUOLO IN PUGLIA FRA DINAMICHE E POLITICHE TERRITORIALI

Basic Indicators (source: GUP)			San Marco in Lamis	Monopoli	Adelfia
A	Inhabitants (Units)	A	13725	49133	17184
B	Surface Area (km ²)	B	234.20	157.89	29.81
C	Surface Area (Hect)	C	23420	15789	2981
D	Productive Areas (Hect)	D	44	162	18
E	Man Power (Units)	E	1780	7847	4922
F	Productive Areas (Hect/inhab)	D/A	0.0032	0.0033	0.001
G	Overall Productive Areas Hect/Hect	D/B	0.0019	0.0103	0.0060
H	Residential Areas (Hect) Residential Rooms Demand	H	178	1500	140
I	(1 room = 0.8 inhabitants = 30 m ² of surface)	I	4000	14676	6400
L	Residential areas per capita (Hect/inhab)	H/A	0.0130	0.0305	0.0081
Basic Indicators (source: RLUM)			San Marco in Lamis	Monopoli	Adelfia
M	Woody/natural surfaces (Hect)	M	14772.25	8186.4900	98.7700
N	Artificial surfaces (Hect)	N	521.41	1873.8800	281.5800
Derived Indicators			San Marco in Lamis	Monopoli	Adelfia
O	CAU-Current Artificial Use Index (Hect/inhab)	N/A	0.0380	0.0381	0.0164
P	PAS-Potential Artificial Surfaces (Hect)	C-(M+N)	8126.34	5728.6300	2600.6500
Q	VAU-Virtual Artificial Use Index (Hect/inhab)	P/A	0.5921	0.1166	0.1513
R	PAU-Post-plan Artificial Use Index (Hect/inhab)	P/ [A+(0.8×I)]	0.4801	0.0898	0.1103
S	AHPV-Average Housing Property Value (€/m ²)	S	1050	1600	1350
T	YIC-Yearly Income per Capita (€/inhab)	T	14102	14533	14763



Food and Agriculture Organization
of the United Nations

WORLD SOIL DAY

2017

IL CONSUMO DI
SUOLO IN
PUGLIA FRA
DINAMICHE E
POLITICHE
TERRITORIALI



Food and Agriculture Organization of the United Nations

WORLD SOIL DAY

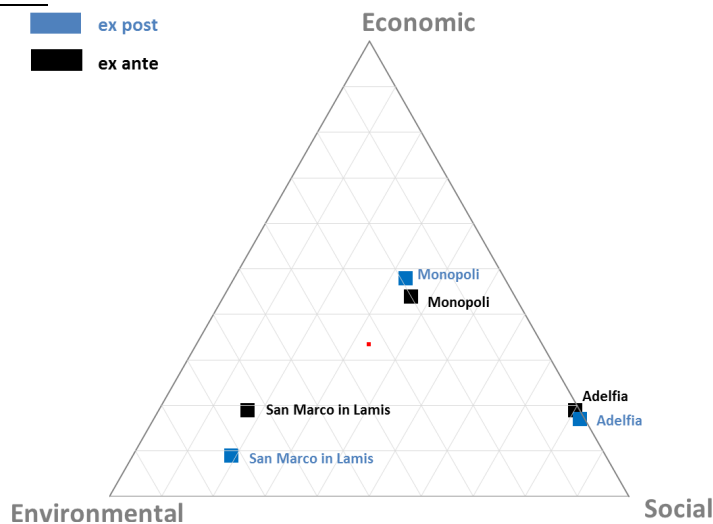
2017

IL CONSUMO DI SUOLO IN PUGLIA FRA DINAMICHE E POLITICHE TERRITORIALI

Basic Indicators (source: GUP)		San Marco in Lamis	Monopoli	Adelfia	
A	Inhabitants (Units)	A	13725	49133	17184
B	Surface Area (km ²)	B	234.20	157.89	29.81
C	Surface Area (Hect)	C	23420	15789	2981
D	Productive Areas (Hect)	D	44	162	18
E	Man Power (Units)	E	1780	7847	4922
F	Productive Areas (Hect/inhab)	D/A	0.0032	0.0033	0.001
G	Overall Productive Areas Hect/Hect	D/B	0.0019	0.0103	0.0060
H	Residential Areas (Hect)	H	178	1500	140
I	Residential Rooms Demand (1 room = 0.8 inhabitants = 30 m ² of surface)	I	4000	14676	6400
L	Residential areas per capita (Hect/inhab)	H/A	0.0130	0.0305	0.0081
Basic Indicators (source: RLUM)		San Marco in Lamis	Monopoli	Adelfia	
M	Woody/natural surfaces (Hect)	M	14772.25	8186.4900	98.7700
N	Artificial surfaces (Hect)	N	521.41	1873.8800	281.5800
Derived Indicators		San Marco in Lamis	Monopoli	Adelfia	
O	CAU-Current Artificial Use Index (Hect/inhab)	N/A	0.0380	0.0381	0.0164
P	PAS-Potential Artificial Surfaces (Hect)	C-(M+N)	8126.34	5728.6300	2600.6500
Q	VAU-Virtual Artificial Use Index (Hect/inhab)	P/A	0.5921	0.1166	0.1513
R	PAU-Post-plan Artificial Use Index (Hect/inhab)	P/[A+(0.8×I)]	0.4801	0.0898	0.1103
S	AHPV-Average Housing Property Value (€/m ²)	S	1050	1600	1350
T	YIC-Yearly Income per Capita (€/inhab)	T	14102	14533	14763

■ ex post
■ ex ante

Triangolo di Seregaldin





Food and Agriculture Organization of the United Nations



Food and Agriculture Organization of the United Nations

Google Custom Search

About FAO | In Action | Countries | Themes | Media | Publications | Statistics | Partnerships

العربية 中文 English Français Русский Español

World Soil Day

Home About World Soil Day Campaign Materials Activities Global Soil Organic Carbon map Worldwide Events Key Messages



95% of food is produced on our soils.

5th December, World Soil Day

The **Global Soil Partnership** is dedicating World Soil Day 2017 to the theme "Caring for the Planet starts from the Ground". Soil is a finite natural resource. On a human time-scale it is non-renewable. However, despite the essential role that soil plays in human livelihoods, there is a worldwide increase in degradation of soil resources due to inappropriate management practices, population pressure driving unsustainable intensification and inadequate governance over this essential resource.

Caring for the Planet starts from the Ground



GLOBAL SOIL PARTNERSHIP

WORLD SOIL DAY

2017

IL CONSUMO DI SUOLO IN PUGLIA FRA DINAMICHE E POLITICHE TERRITORIALI